



Cleveland Crane  
& Shovel Sales, Inc.

26781 CANNON ROAD  
CLEVELAND, OHIO 44146  
(440) 439-4749 OFFICE (440) 439-2177 FAX  
[www.craneandshovel.net](http://www.craneandshovel.net)

# MLC650 3.5 m wide boom

## Specification Sheet



**NEW** optional 3.5 m wide boom insert delivers additional capacities and tip height

10t  
10t  
10t  
10t  
10t

ASME B30.5

**Manitowoc**

## Liftcrane Boom Capacities

**Boom No. B10:500**  
**474,400 lb VPC (Variable Position Counterweight)**  
**360 Degree Rating**

**MLC300**  
**SERIES 3**

**LIFTING CAPACITIES:** Lifting capacities for various boom lengths and operating radii are for freely suspended loads and may be based on percent of static tipping or strength of structural components. Capacities must be reduced by applicable deducts.

**MACHINE TRAVEL:** Machine to travel on a firm, level, and uniformly supporting surface. Boom rotation to center boom angle range shown in capacity chart. Refer to Maximum Allowable Travel Specification chart No. 9342-A.

**OPERATING RADIUS:** Operating radius is horizontal distance from axis of rotation to center of vertical hoist line or load block.

**BOOM ANGLE:** Boom angle in degrees (°) is angle between horizontal and centerline of boom butt and inserts, and is an indication of operating radius. In all cases, operating radius shall govern capacity.

**BOOM POINT ELEVATION:** Boom point elevation is vertical distance from ground level to centerline of boom point shaft.

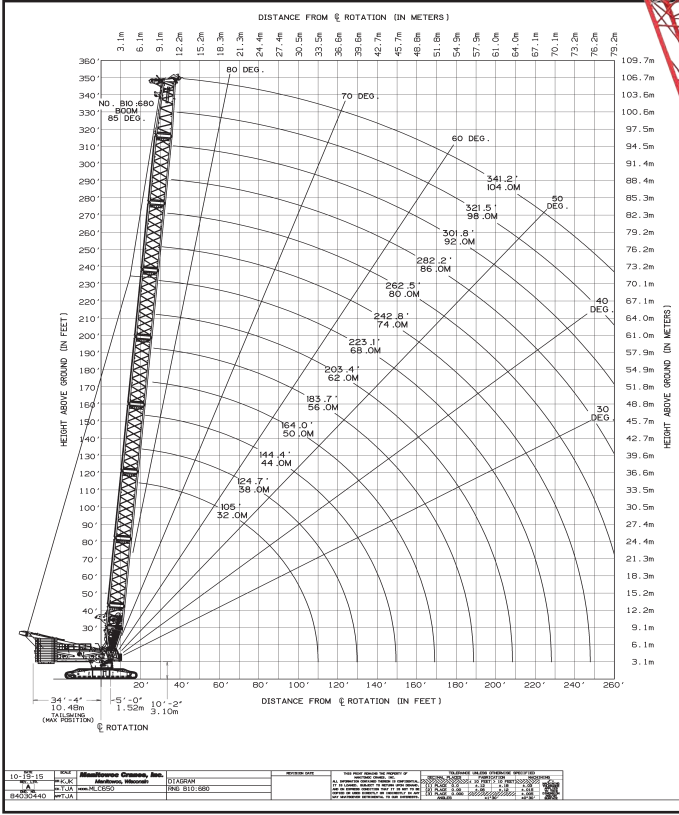
**MACHINE EQUIPMENT:** Machine equipped with 31 ft 10 in. crawlers, 48 in. or 60 in. treads, 30 ft live mast, 24 part boom hoist reeving, boom support straps, and 474,400 lb VPC.

**BOOM BACKWARD STABILITY:** Capacities indicated by (b) require 5,000 lb minimum weight. **Caution: Do not operate in areas indicated by (b) without required minimum weights.** Boom will not lower and boom hoist wire may go slack causing wire rope damage or failure.

**OPERATING CONDITIONS:** Machine to operate on a firm, level, and uniformly supporting surface. Refer to Boom Rigging No. 81023380, Wire Rope Specification No. 9341-A, Counterweight Arrangement No. 9345-A, and Wind Conditions chart No. 9344-A. Operator judgment must be used to allow for dynamic load effects of swinging, hoisting or lowering, travel, wind conditions, as well as adverse operating conditions and physical machine depreciation. Refer to Operator's Manual for operating guidelines.

Manitowoc Cranes  
 Manitowish Wisconsin 5320 U.S.A.

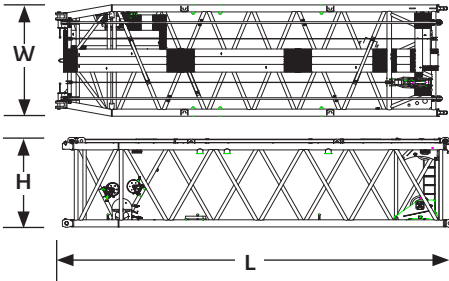
9336-A 2016 11-22  
 1/10



Access all current Manitowoc crawler crane load charts at [www.cranelibrary.com](http://www.cranelibrary.com)



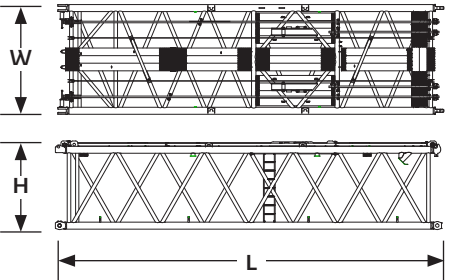
## Outline dimensions



### 12 m (39.4 ft) No. 680-685 Transition with sheave

Length	12,3 m	40' 4"
Width	3,5 m	11' 6"
Height	2,8 m	9' 2"
Weight	12 000 kg	26,500 lb

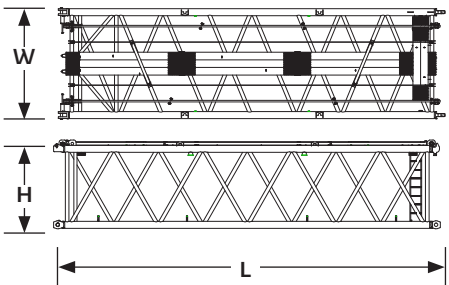
Note: Includes boom straps and backstay straps.



### 12 m (39.4 ft) No. 685 Insert with equalizer brackets

Length	12,3 m	40' 4"
Width	3,5 m	11' 6"
Height	2,8 m	9' 2"
Weight	10 600 kg	23,400 lb

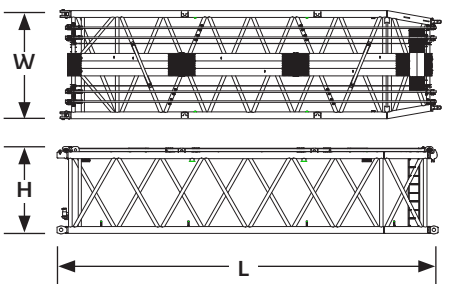
Note: Includes boom straps and backstay straps.



### 12 m (39.4 ft) No. 685 Insert

Length	12,3 m	40' 4"
Width	3,5 m	11' 6"
Height	2,8 m	9' 2"
Weight	11 500 kg	25,400 lb

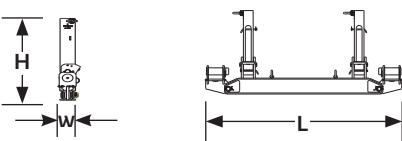
Note: Includes boom straps and backstay straps.



### 12 m (39.4 ft) No. 685-680 Transition

Length	12,3 m	40' 4"
Width	3,5 m	11' 6"
Height	2,8 m	9' 2"
Weight	12 000 kg	26,500 lb

Note: Includes boom straps and backstay straps.

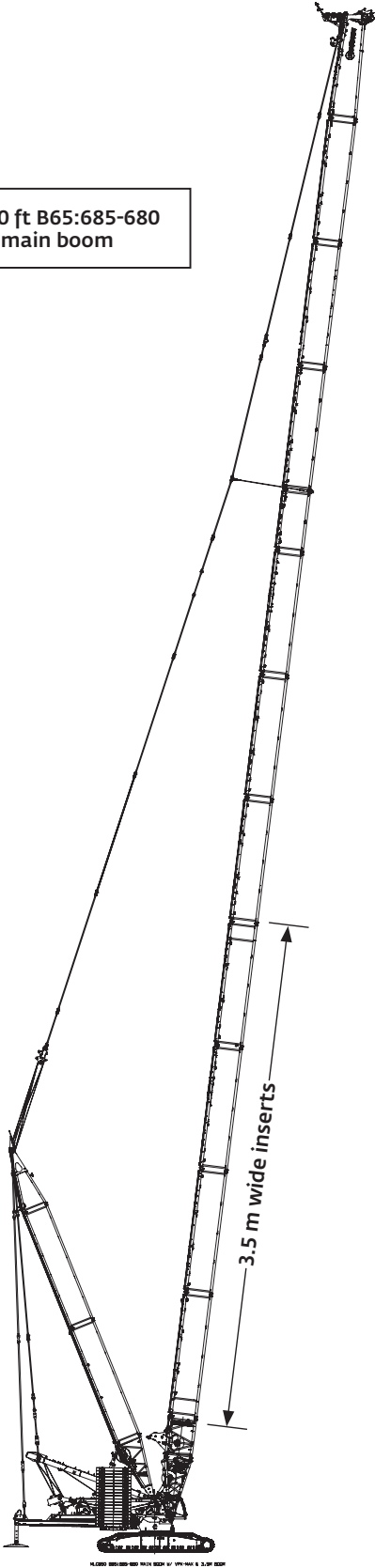


### Intermediate suspension

Length	3,1 m	10' 2"
Width	0,2 m	7"
Height	1,3 m	4' 3"
Weight	1000 kg	2200 lb

## Boom combinations

479.0 ft B65:685-680  
main boom

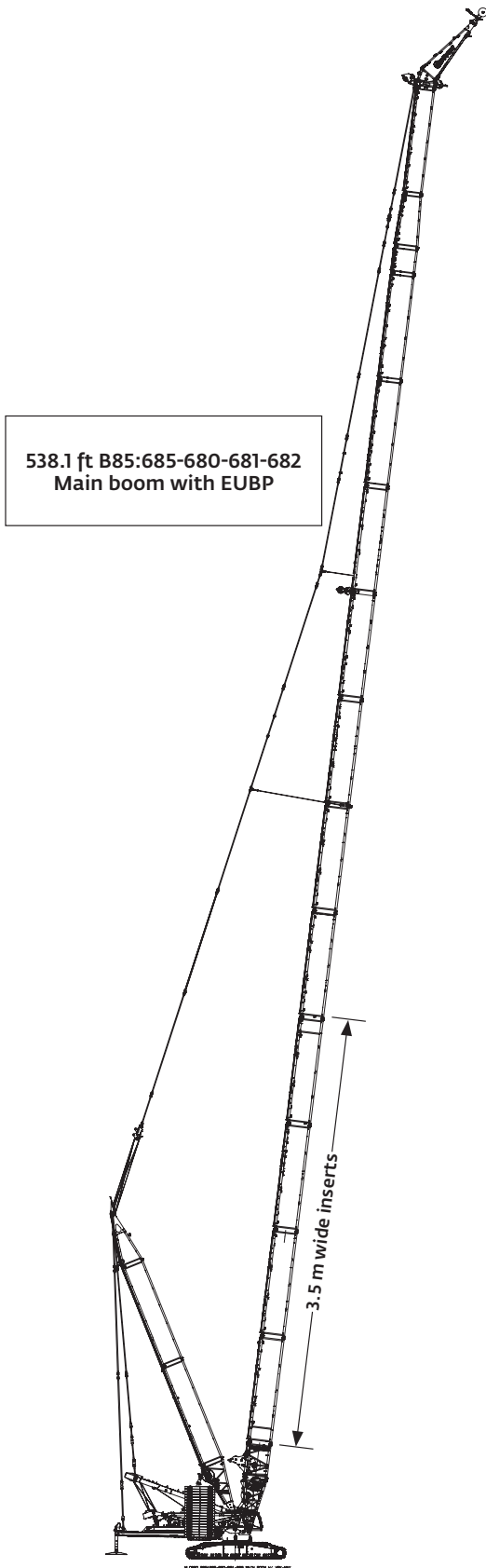


B65:685-680 Main boom						
Boom length (ft)	Main boom inserts					
	39.4 ft No.685	13.1 ft XH No. 680	39.4 ft XH No. 680	39.4 ft H No. 680	19.7 ft H No. 680	39.4 ft M No. 680
183.7	2	1	0	1	0	0
203.4	2	1	0	1	1	0
223.1	4	1	0	0	0	0
242.8	4	1	0	0	1	0
262.5	4	1	0	1	0	0
282.2	4	1	0	1	1	0
301.8	4	1	1	1	0	0
321.5	4	1	1	1	1	0
341.2	4	1	2	1	0	0
360.9	4	1	2	1	1	0
380.6	4	1	2	1	0	1
400.3	4	1	2	1	1	1
419.9	4	1	2	2	0	1
439.6	4	1	2	2	1	1
459.3	4	1	2	2	0	2
479.0	4	1	2	2	1	2

*XH: Extra heavy insert*  
*H: Heavy insert*  
*M: Medium insert*

B65:680-685 Main boom																
881,800 lb Counterweight																
360°	lb x 1000															
Radius (ft)	Boom length (ft)															
	184	203	223	243	262	282	302	322	341	361	381	400	420	440	459	479
32	1322.7	-	-	-	-	-	-	-	-	-	-	-	-	-	-	-
36	1255.9	1200.2	-	-	-	-	-	-	-	-	-	-	-	-	-	-
40	1226.1	1146.4	1102.0	1055.4	-	-	-	-	-	-	-	-	-	-	-	-
45	1226.1	1146.4	1102.0	1007.0	961.1	871.8	-	-	-	-	-	-	-	-	-	-
50	1226.1	1146.4	1102.0	1007.0	961.1	831.6	796.5	760.7	-	-	-	-	-	-	-	-
60	1086.7	1083.3	1069.9	1007.0	961.1	794.4	743.4	699.0	633.3	539.0	470.3	413.1	-	-	-	-
70	925.5	922.1	915.6	910.3	896.6	794.4	743.4	699.0	584.3	539.0	470.3	413.1	363.4	320.5	280.3	264.9
80	803.6	800.2	793.7	790.0	787.1	774.7	743.4	699.0	572.0	539.0	470.3	413.1	363.4	320.5	280.2	264.7
90	708.1	704.7	698.1	694.5	691.6	687.7	675.5	663.5	572.0	539.0	470.3	413.1	363.4	320.5	280.0	264.5
100	622.4	619.2	613.4	610.1	607.4	603.8	598.4	594.7	572.0	539.0	470.3	413.1	363.3	320.5	279.7	264.0
110	551.2	548.2	542.3	539.1	536.5	533.0	527.6	524.0	519.7	509.7	470.3	402.4	362.9	320.3	279.3	263.6
120	493.3	490.3	484.5	481.3	478.7	475.2	470.0	466.4	462.1	458.4	451.8	385.9	362.4	319.9	278.8	262.9
130	445.2	442.2	436.4	433.2	430.7	427.3	422.0	418.5	414.3	410.6	409.0	376.9	361.8	319.4	278.3	262.3
140	404.6	401.6	395.8	392.7	390.2	386.8	381.5	378.0	373.8	370.2	368.5	364.9	356.8	318.8	277.7	261.9
150	369.8	366.8	361.1	358.0	355.5	352.1	346.9	343.4	339.2	335.6	333.9	330.3	328.0	318.1	277.0	261.2
160	339.7	336.8	331.0	327.9	325.5	322.1	316.9	313.4	309.3	305.6	304.0	300.3	298.0	293.8	276.4	260.5
170	313.4	310.5	304.7	301.7	299.2	295.9	290.7	287.2	283.1	279.4	277.8	274.1	271.9	267.6	268.2	259.8
180	290.1	287.3	281.6	278.5	276.1	272.7	267.6	264.1	260.0	256.3	254.6	251.0	248.8	244.6	245.1	241.0
190	-	266.6	261.0	257.9	255.5	252.2	247.0	243.5	239.5	235.8	234.1	230.4	228.3	224.1	224.6	220.5
200	-	248.1	242.5	239.5	237.1	233.8	228.6	225.2	221.1	217.5	215.7	212.1	209.9	205.8	206.3	202.2
220	-	-	210.7	207.8	205.5	202.2	197.1	193.7	189.6	186.0	184.3	180.6	178.5	174.3	174.9	170.8
240	-	-	-	181.5	179.3	176.1	171.0	167.6	163.6	160.0	158.2	154.6	152.5	148.4	148.9	144.8
260	-	-	-	-	-	154.1	149.1	145.7	141.7	138.1	136.4	132.7	130.6	126.5	127.1	123.1
280	-	-	-	-	-	-	130.2	126.9	123.0	119.4	117.7	114.0	112.0	107.9	108.5	104.5
300	-	-	-	-	-	-	-	110.6	106.8	103.2	101.6	97.9	95.9	91.9	92.5	88.4
320	-	-	-	-	-	-	-	-	92.5	89.1	87.5	83.8	81.8	77.8	78.5	74.4
340	-	-	-	-	-	-	-	-	-	71.7	75.0	71.4	69.4	65.5	66.1	62.1
360	-	-	-	-	-	-	-	-	-	-	63.9	60.3	58.4	54.5	55.2	51.2
380	-	-	-	-	-	-	-	-	-	-	-	36.2	48.5	44.7	45.4	41.2
400	-	-	-	-	-	-	-	-	-	-	-	-	33.2	35.3	36.1	30.7
420	-	-	-	-	-	-	-	-	-	-	-	-	-	25.6	26.5	21.2
440	-	-	-	-	-	-	-	-	-	-	-	-	-	-	17.5	-

## Boom combinations



**B85:685-680-681-682 Boom with 25 ft extended upper boom point (EUBP)**

Boom length (ft)	Main boom inserts					
	39.7 ft No.685	13.1 ft XH No. 680	39.4 ft XH No. 680	39.4 ft H No. 680	19.7 ft H No. 680	39.4 ft M No. 680
351.0	4	1	1	0	1	1
360.9	4	1	1	0	1	1
370.7	4	1	2	0	0	1
380.6	4	1	2	0	0	1
390.4	4	1	2	0	1	1
400.3	4	1	2	0	1	1
410.1	4	1	2	0	1	1
419.9	4	1	2	0	1	1
429.8	4	1	2	1	1	1
439.6	4	1	2	1	1	1
449.5	4	1	2	1	1	1
459.3	4	1	2	1	1	1
469.2	4	1	2	2	1	1
479.0	4	1	2	2	1	1
488.8	4	1	2	2	1	1
498.7	4	1	2	2	1	1
508.5	4	1	2	2	1	1
518.4	4	1	2	2	1	1
528.2	4	1	2	2	1	1
538.1	4	1	2	2	0	1
Boom length (ft)	Luffing jib inserts					
	19.7 ft No. 680-681	9.8 ft No. 681	19.7 ft No. 681	39.7 ft No. 681	39.7 ft No. 681-682	39.7 ft No. 682
351.0	1	0	0	0	1	0
360.9	1	1	0	0	1	0
370.7	1	0	0	0	1	0
380.6	1	1	0	0	1	0
390.4	1	0	0	0	1	0
400.3	1	1	0	0	1	0
410.1	1	0	1	0	1	0
419.9	1	1	1	0	1	0
429.8	1	0	0	0	1	0
439.6	1	1	0	0	1	0
449.5	1	0	1	0	1	0
459.3	1	1	1	0	1	0
469.2	1	0	0	0	1	0
479.0	1	1	0	0	1	0
488.8	1	0	1	0	1	0
498.7	1	1	1	0	1	0
508.5	1	0	0	1	1	0
518.4	1	1	0	1	1	0
528.2	1	0	1	0	1	1
538.1	1	1	0	1	1	1

*XH: Extra heavy insert*

*H: Heavy insert*

*M: Medium insert*

B85-685-680-681-682 Boom with EUBP 28° Offset										
881,800 lb Counterweight										
360°	lb x 1000									
Radius (ft)	Boom length (ft)									
	361	381	400	420	440	459	479	499	518	538
52	341.6	341.6	-	-	-	-	-	-	-	-
54	341.6	341.6	341.6	-	-	-	-	-	-	-
56	341.6	341.6	341.6	334.5	-	-	-	-	-	-
58	341.6	341.6	341.6	334.5	296.8	-	-	-	-	-
60	341.6	341.6	341.6	334.4	296.7	254.0	-	-	-	-
65	341.6	341.6	341.6	334.4	296.7	253.9	231.7	207.4	186.6	-
70	341.6	341.6	341.6	334.4	296.6	253.7	231.6	207.2	186.3	164.6
75	341.6	341.6	341.6	334.3	296.5	253.6	231.4	207.0	186.1	164.2
80	341.6	341.6	341.6	331.1	296.4	253.4	231.2	206.7	185.8	163.9
85	341.6	341.6	341.6	325.7	296.2	253.2	231.0	206.5	185.6	163.6
90	341.6	341.6	341.6	320.3	296.1	253.0	230.9	206.3	185.3	163.2
95	341.6	341.6	341.6	314.8	295.8	252.8	230.6	206.0	185.0	162.9
100	341.6	341.6	341.6	309.4	295.6	252.6	230.4	205.7	184.7	162.6
110	341.6	341.6	341.6	298.6	295.3	252.1	230.0	205.2	184.2	161.9
120	341.6	341.6	330.9	288.1	294.8	251.7	229.5	204.7	183.6	161.2
130	341.6	341.6	320.3	277.9	294.3	251.1	229.0	204.2	183.0	156.6
140	341.6	340.8	310.1	268.3	286.4	247.3	228.5	203.6	182.4	150.8
150	336.7	331.4	300.3	259.0	278.6	239.9	228.0	203.1	181.8	144.9
160	325.4	321.8	291.0	250.3	270.9	232.6	227.5	202.5	181.3	139.3
170	308.3	304.5	282.4	242.0	263.6	225.7	226.9	201.1	176.0	133.6
180	284.3	280.5	274.2	234.2	256.6	219.1	226.4	195.3	170.4	128.4
190	263.1	259.2	255.9	226.9	249.8	212.8	221.1	189.7	165.1	123.4
200	244.1	240.2	236.9	220.0	230.8	206.9	215.4	184.3	160.0	118.6
220	211.6	207.7	204.3	202.7	198.1	195.9	191.5	174.5	150.6	110.0
240	184.8	180.9	177.5	175.9	171.2	169.6	164.5	164.3	142.2	102.4
260	162.3	158.4	154.9	153.3	148.7	147.0	141.9	141.7	134.7	95.6
280	143.1	139.2	135.7	134.1	129.4	127.8	122.6	122.4	122.0	89.3
300	126.5	122.6	119.1	117.6	112.8	111.2	106.0	105.8	105.4	83.7
320	112.0	108.1	104.7	103.1	98.4	96.7	91.6	91.3	90.9	78.9
340	99.2	95.3	91.9	90.4	85.6	84.0	78.8	78.5	78.2	74.6
360	-	83.9	80.6	79.1	74.3	72.7	67.5	67.2	66.9	68.3

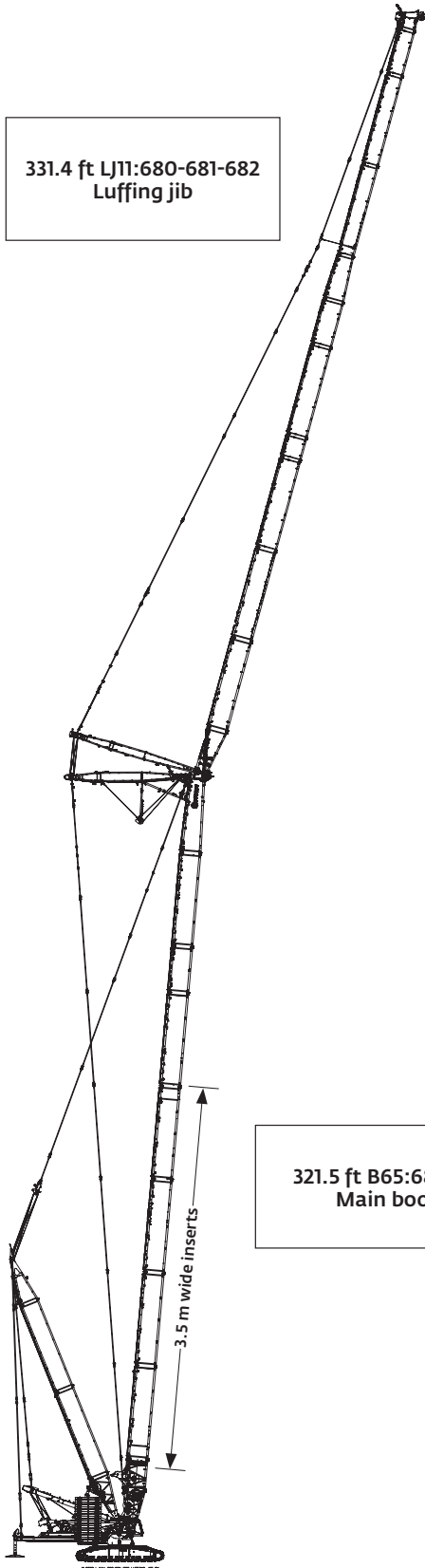
## Capacities

### Extended upper boom point

B85-685-680-681-682 Boom with EUBP 35° Offset										
881,800 lb Counterweight										
360°	lb x 1000									
Radius (ft)	Boom length (ft)									
	361	381	400	420	440	460	480	499	518	538
54	305.5	-	-	-	-	-	-	-	-	-
56	305.5	314.8	-	-	-	-	-	-	-	-
58	305.5	314.8	321.5	320.7	-	-	-	-	-	-
60	305.5	314.8	321.5	320.7	293.7	-	-	-	-	-
65	305.5	314.8	321.5	320.7	293.7	251.7	230.3	206.4	-	-
70	305.5	314.8	321.5	320.7	293.6	251.5	230.2	206.1	185.7	163.7
75	305.5	314.8	321.5	317.8	293.5	251.5	230.1	205.9	185.3	163.3
80	305.5	314.8	321.5	313.2	293.4	251.3	229.9	205.7	185.1	163.0
85	305.5	314.8	321.5	308.5	293.3	251.1	229.7	205.4	184.8	162.7
90	305.5	314.8	321.5	303.8	293.2	251.0	229.5	205.2	184.6	162.3
95	305.5	314.8	321.5	299.0	293.1	250.8	229.3	205.0	184.3	162.0
100	305.5	314.8	321.5	294.2	292.9	250.6	229.1	204.8	184.0	161.6
110	305.5	314.8	321.5	284.7	292.7	250.2	228.8	204.3	183.5	160.6
120	305.5	310.7	313.5	275.3	288.2	249.8	228.3	203.8	182.9	155.6
130	296.2	301.3	304.3	266.3	280.8	245.0	227.9	203.3	182.4	150.6
140	287.4	292.6	295.3	257.5	273.6	237.9	227.4	202.8	181.8	145.5
150	279.3	284.4	286.8	249.1	266.6	231.1	227.0	202.2	181.3	140.1
160	271.7	276.9	278.6	241.2	259.8	224.5	226.5	200.6	176.7	134.8
170	264.7	269.8	270.9	233.7	253.2	218.2	224.8	194.9	171.2	129.9
180	258.1	263.3	263.6	226.5	247.0	212.1	219.2	189.5	165.9	125.1
190	252.0	257.1	256.8	219.9	241.0	206.3	213.8	184.2	160.9	120.6
200	244.9	241.1	237.8	213.6	231.8	200.8	208.7	179.3	156.2	116.3
220	212.3	208.5	205.1	202.3	199.1	190.6	192.6	170.1	147.3	108.1
240	185.4	181.5	178.1	176.6	172.0	170.4	165.4	161.7	139.3	100.7
260	162.8	158.9	155.5	153.9	149.3	147.7	142.7	142.5	132.1	94.2
280	143.5	139.6	136.2	134.7	130.0	128.4	123.3	123.1	122.7	88.1
300	126.8	122.9	119.5	118.0	113.3	111.7	106.6	106.4	106.0	82.7
320	112.2	108.4	105.0	103.5	98.8	97.2	92.1	91.8	91.5	78.0
340	-	95.5	92.1	90.7	86.0	84.4	79.3	79.0	78.7	73.9
360	-	-	80.7	79.3	74.6	73.0	67.9	67.6	67.3	68.7

B85-685-680-681-682 Boom with EUBP 41° Offset										
881,800 lb Counterweight										
360°	lb x 1000									
Radius (ft)	Boom length (ft)									
	361	381	400	420	440	460	480	499	518	538
56	244.0	-	-	-	-	-	-	-	-	-
58	244.0	244.0	-	-	-	-	-	-	-	-
60	244.0	244.0	244.0	-	-	-	-	-	-	-
65	244.0	244.0	244.0	244.0	244.0	244.0	-	-	-	-
70	244.0	244.0	244.0	244.0	244.0	244.0	229.4	205.6	185.4	-
75	244.0	244.0	244.0	244.0	244.0	244.0	229.2	205.4	185.1	162.8
80	244.0	244.0	244.0	244.0	244.0	244.0	229.1	205.2	184.9	162.5
85	244.0	244.0	244.0	244.0	244.0	244.0	228.9	204.9	184.6	162.1
90	244.0	244.0	244.0	244.0	244.0	244.0	228.8	204.7	184.4	161.8
95	244.0	244.0	244.0	244.0	244.0	244.0	228.6	204.5	184.1	161.0
100	244.0	244.0	244.0	244.0	244.0	244.0	228.5	204.3	183.8	158.8
110	244.0	244.0	244.0	244.0	244.0	244.0	228.2	203.9	183.3	154.4
120	244.0	244.0	244.0	244.0	244.0	243.1	227.8	203.4	182.8	149.8
130	244.0	244.0	244.0	244.0	244.0	236.5	227.4	203.0	182.3	145.3
140	244.0	244.0	244.0	244.0	244.0	230.1	227.1	202.5	181.7	140.8
150	244.0	244.0	244.0	241.4	244.0	223.8	226.7	200.3	177.6	135.7
160	244.0	244.0	244.0	234.1	244.0	217.8	222.9	194.8	172.2	130.9
170	241.0	244.0	244.0	227.3	244.0	211.9	217.5	189.5	166.9	126.2
180	236.2	239.9	243.5	220.7	239.5	206.4	212.4	184.4	162.0	121.7
190	231.7	235.4	239.0	214.5	234.0	201.0	207.5	179.5	157.3	117.5
200	227.6	231.2	234.7	208.8	228.9	195.9	202.8	174.8	152.8	113.4
220	212.9	209.2	205.9	198.3	199.9	186.4	193.5	166.3	144.4	106.0
240	185.9	182.1	178.8	177.3	172.7	171.2	166.3	158.4	136.8	99.3
260	163.2	159.3	156.0	154.5	149.9	148.4	143.4	143.2	129.9	92.9
280	143.8	139.9	136.6	135.1	130.5	128.9	123.9	123.7	123.4	87.0
300	127.0	123.2	119.8	118.4	113.7	112.2	107.1	106.9	106.6	81.8
320	-	-	105.2	103.8	99.1	97.6	92.5	92.3	92.0	77.2
340	-	-	-	90.9	86.2	84.7	79.6	79.4	79.1	73.2
360	-	-	-	-	74.8	73.3	68.2	67.9	67.7	69.1

## Boom combinations



LJ11:680-681-682 Luffing jib combinations

Luffing jib length (ft)	Boom inserts		Luffing jib inserts						
	39.4 ft No.680H	39.4 ft No.680M	39.4 ft No. 680-681	9.8 ft No. 681	19.7 ft No. 681	39.4 ft No 681	19.7 ft No. 681-682	19.7 ft No. 682	39.4 ft No. 682
85.3	0	0	1	0	0	0	1	0	0
95.1	0	0	1	1	0	0	1	0	0
105.0	0	0	1	0	1	0	1	0	0
114.8	0	0	1	1	1	0	1	0	0
124.7	0	0	1	0	0	1	1	0	0
134.5	0	0	1	1	0	1	1	0	0
144.4	0	0	1	0	1	1	1	0	0
154.2	0	0	1	1	1	1	1	0	0
164.0	0	0	1	0	1	1	1	1	0
173.9	0	0	1	1	1	1	1	1	0
193.6	0	0	1	1	1	1	1	0	1
213.3	0	0	1	1	1	1	1	1	1
232.9	0	1	1	1	1	1	1	0	1
252.6	0	1	1	1	1	1	1	1	1
272.3	0	1	1	1	1	1	1	0	2
292.0	1	1	1	1	1	1	1	1	1
311.7	1	1	1	1	1	1	1	0	2
331.4	1	1	1	1	1	1	1	1	2

XH: Extra heavy insert  
H: Heavy insert  
M: Medium insert

321.5 ft B65:685-680  
Main boom

3.5 m wide inserts

LJ11:680-681-682 on B65:685-680 85° Offset	
881,800 lb Counterweight	
360°	lb x 1000

184 ft boom length					
Radius (ft)	Luffing Jib Length (ft)				
	85	135	194	272	331
55	771.6	-	-	-	-
60	771.6	-	-	-	-
65	754.8	594.6	-	-	-
70	724.8	585.7	-	-	-
75	696.4	573.2	-	-	-
80	669.9	555.9	354.8	-	-
90	609.6	545.3	354.6	-	-
100	472.7	501.5	353.2	203.0	-
110	-	447.5	350.8	202.0	-
120	-	399.1	341.6	200.6	140.9
130	-	357.9	316.0	198.9	139.4
140	-	325.0	290.5	197.0	137.8
150	-	280.3	266.0	195.1	136.1
160	-	-	243.3	192.6	134.3
170	-	-	223.0	188.3	132.4
180	-	-	205.1	177.5	130.6
190	-	-	190.0	166.8	128.7
200	-	-	178.3	156.4	126.8
220	-	-	-	137.1	121.4
240	-	-	-	120.4	109.1
260	-	-	-	107.0	97.5
280	-	-	-	96.2	87.2
300	-	-	-	-	78.2
320	-	-	-	-	69.6
340	-	-	-	-	51.4

203 ft boom length					
Radius (ft)	Luffing Jib Length (ft)				
	85	135	194	272	331
60	681.1	-	-	-	-
65	668.6	-	-	-	-
70	647.5	528.7	-	-	-
75	626.3	528.1	-	-	-
80	605.4	523.3	-	-	-
90	565.7	494.9	325.9	-	-
100	501.2	460.5	324.5	-	-
110	447.1	414.2	322.1	187.7	-
120	391.5	372	314.3	187.0	133.2
130	262.1	335.5	291.7	185.3	132.0
140	-	306.1	269.1	183.7	130.6
150	-	283.6	247.3	181.9	129.1
160	-	199.0	227	179.9	127.6
170	-	-	208.7	175.2	125.9
180	-	-	192.6	165.5	124.3
190	-	-	179.0	155.8	122.6
200	-	-	168.2	146.2	120.9
220	-	-	-	128.5	112.3
240	-	-	-	113.1	100.8
260	-	-	-	100.7	90.1
280	-	-	-	92.3	80.5
300	-	-	-	-	72.2
320	-	-	-	-	65.8
340	-	-	-	-	50.6

# Capacities

## Luffing jib

### LJ11:680-681-682 on B65:685-680 85° Offset

881,800 lb Counterweight

360° lb x 1000

#### 282 ft boom length

Radius (ft)	Luffing Jib Length (ft)				
	85	135	194	272	331
60	545.7	-	-	-	-
65	542.0	-	-	-	-
70	533.6	-	-	-	-
75	518.2	383.0	-	-	-
80	502.3	381.7	-	-	-
90	469.5	375.6	255.7	-	-
100	440.3	366.2	255.0	-	-
110	411.6	343.2	252.9	156.8	-
120	-	314.0	249.4	156.1	-
130	-	287.4	242.2	154.8	112.1
140	-	264.5	226.0	153.4	111.3
150	-	246.5	210.0	151.8	110.2
160	-	235.9	194.7	150	109.1
170	-	-	180.4	146.4	107.8
180	-	-	167.6	138.6	106.4
190	-	-	156.5	130.8	104.9
200	-	-	147.3	123.1	102.6
220	-	-	137.7	108.8	92.7
240	-	-	-	96.3	83.1
260	-	-	-	86.0	74.2
280	-	-	-	78.6	66.1
300	-	-	-	76.2	59.2
320	-	-	-	-	53.8
340	-	-	-	-	50.2
360	-	-	-	-	37.1

#### 341 ft boom length

Radius (ft)	Luffing Jib Length (ft)			
	85	135	194	272
65	380.0	-	-	-
70	378.9	-	-	-
75	375.3	-	-	-
80	370.3	280.7	-	-
90	357.8	277.0	-	-
100	346.7	270.5	197.3	-
110	333.5	262.8	195.2	-
120	319.2	254.9	191.9	126.1
130	-	238.9	188.0	125.2
140	-	222.1	183.7	124.0
150	-	208.0	173.1	122.2
160	-	197.8	162	120.3
170	-	195.1	151.4	118.2
180	-	-	141.7	112.6
190	-	-	133.0	106.7
200	-	-	125.7	100.8
220	-	-	116.4	89.7
240	-	-	-	79.8
260	-	-	-	71.6
280	-	-	-	65.5
300	-	-	-	63.0



## Manitowoc Cranes

### Regional headquarters

#### Americas

**Manitowoc, Wisconsin, USA**

Tel: +920 684 4410

Fax: +1 920 652 9778

**Shady Grove, Pennsylvania, USA**

Tel: +1 717 597 8121

Fax: +1 717 597 4062

#### Europe, Middle East, Africa

**Dardilly, France - TOWERS**

Tel: +33 (0)4 72 18 20 20

Fax: +33 (0)4 72 18 20 00

**Wilhelmshaven, Germany - MOBILE**

Tel: +49 (0) 4421 294 0

Fax: +49 (0) 4421 294 4301

#### China

**Shanghai, China**

Tel: +86 21 6457 0066

Fax: +86 21 6457 4955

#### Greater Asia-Pacific

**Singapore**

Tel: +65 6264 1188

Fax: +65 6862 4040

**Dubai, UAE**

Tel: +971 4 8862677

Fax: +971 4 8862678/79



This document is non-contractual. Constant improvement and engineering progress make it necessary that we reserve the right to make specification, equipment, and price changes without notice. Illustrations shown may include optional equipment and accessories and may not include all standard equipment.